

Infection Control Solutions



AlphaProTech
INCORPORATED



Magic Arch®

PFL®



Cutaway view of PFL Face Mask

Concerned About Laser Plume and/or Aerosols?

PFL® (Positive Facial Lock®) provides Better Protection Through Better Fit

- PFL face masks custom-fit to any size face
- Indicated for maximum protection from laser plume and/or aerosols caused by the use of high speed drills

“It’s More Than the Filter, It’s the Fit!®”

PFL® Face Masks

PFL® Maximum Protection Masks

PFL (Positive Facial Lock®) masks are fluid resistant and feature our exclusive Twist-Seal® chin piece which allows a custom fit to any size face, reducing potential for small particles to be inhaled around the borders of the face mask. This unique design virtually eliminates gaps at the border of the mask.

PFL masks incorporate the patented Magic Arch® supports, which keep the mask away from your nose and mouth without restricting downward vision, providing a cooler, more comfortable breathing chamber.



608 PD



615 BS

Performance	
Test Performed	Result (Average)
Differential Pressure per MIL-M36954C	2.3 mm H ₂ O
Latex Particle Challenge (Filtration Efficiency) @ 0.1 micron per ASTM F2299	99.0%

PFL® Headband Masks

608	Blue
608 BS	Blue Stripe
608 PD	Purple
	Designer
608 DOG	Dog Print

300/case (6 boxes of 50)

PFL® Ear Loop Masks

615	Blue
615 BS	Blue Stripe
615 PD	Purple Designer
615 PK	Pink Stripe
615 DOG	Dog Print

300/case (6 boxes of 50)

PFL® Laser Mask

This mask is designed to filter the laser plume generated during laser surgery. PFL (Positive Facial Lock) masks are fluid resistant and feature our exclusive Twist-Seal chin piece which allows a custom fit to any size face, reducing potential for small particles to be inhaled around the borders of the face mask. This unique design virtually eliminates gaps at the border of the mask.

PFL masks incorporate the patented Magic Arch supports, which keep the mask away from your nose and mouth without restricting downward vision, providing a cooler, more comfortable breathing chamber.



638

Performance	
Test Performed	Result (Average)
Differential Pressure per MIL-M36954C	4.5 mm H ₂ O
Latex Particle Challenge (Filtration Efficiency) @ 0.1 micron per ASTM F2299	98.7%

PFL® Laser Mask

638	Silver Stripe, Single Headband
-----	-----------------------------------

210/case (6 boxes of 35)



695

**PFL® N-95
Particulate Respirator**

695 Teal Stripe,
Double
Headband

210/case (6 boxes of 35)

N-95 Particular Respirator

The Alpha Pro Tech N-95 Particulate Respirator is NIOSH approved and meets CDC and WHO guidelines. This respirator features our exclusive Magic Arch® and Positive Facial Lock® (PFL®) design. This unique design feature permits the respirator to be "custom fit" to virtually any face, no matter what size or shape.

PFL (Positive Facial Lock) masks are fluid resistant and feature our exclusive Twist-Seal® chin piece which allows a custom fit to any size face, reducing the potential for small particles to be inhaled around the borders of the face mask. This unique design virtually eliminates gaps at the border of the mask.

The N-95 incorporates the patented Magic Arch supports, which keep the mask away from your nose and mouth without restricting downward vision, providing a cooler, more comfortable breathing chamber.

Performance	
Test Performed	Result (Average)
Differential Pressure per MIL-M36954C	6.0 mm H ₂ O
Latex Particle Challenge (Filtration Efficiency) @ 0.1 micron per ASTM F2299	99.9%

PFL® Masks, No Magic Arch®

PFL (Positive Facial Lock) masks are fluid resistant and feature our exclusive Twist-Seal chin piece which allows a custom fit to any size face, reducing potential for small particles to be inhaled around the borders of the face mask. This unique design virtually eliminates gaps at the border of the mask.



108

PFL® Headband Masks

108 Blue

300/case (6 boxes of 50)



115

PFL® Ear Loop Masks

115 Blue

300/case (6 boxes of 50)

Performance	
Test Performed	Result (Average)
Differential Pressure per MIL-M36954C	2.3 mm H ₂ O
Latex Particle Challenge (Filtration Efficiency) @ 0.1 micron per ASTM F2299	99.0%

CoolOne™ Face Masks

CoolOne™ Masks w/Magic Arch®

The CoolOne masks are hypoallergenic and fluid resistant secured with either tie strings or soft knit ear loops which are ultrasonically welded to the mask. The patented Magic Arch support, which holds the mask away from the nose and mouth, provides a cooler, more comfortable breathing chamber without obstructing downward vision. Anti-fog version incorporates a special foam strip at the nosepiece to prevent fogging of eyeglasses.



BL 6055



BL 6001

Performance	
Test Performed	Result (Average)
Differential Pressure per MIL-M36954C	2.0 mm H ₂ O
Latex Particle Challenge (Filtration Efficiency) @ 0.1 micron per ASTM F2299	99.2%

CoolOne™ Ear Loop Masks

BL 6055 Blue
 GR 6055 Green
 PK 6055 Pink
 YL 6055 Yellow

500/case (10 boxes of 50)

CoolOne™ Tie Mask

BL 6001 Blue

300/case (6 boxes of 50)

CoolOne™ Anti-Fog Ear Loop Masks

BL 6155 Blue
 PK 6155 Pink

500/case (10 boxes of 50)



WH 1155

CoolOne™ Sensitive Skin Masks w/Magic Arch®

This mask was designed specifically for users with sensitive skin. The materials are hypoallergenic and are free of pigments. The CoolOne mask incorporates the Magic Arch support strip, which holds the mask away from the nose and mouth providing a cooler, more comfortable breathing chamber without obstructing downward vision. Comfortable soft knit ear loops are ultrasonically welded to the mask. Anti-fog version incorporates a special foam strip at the nosepiece to prevent fogging of eyeglasses.

CoolOne™ Sensitive Skin Ear Loop Mask

WH 1155 White
 500/case (10 boxes of 50)

CoolOne™ Anti-Fog Sensitive Skin Ear Loop Mask

WH 6155 White
 500/case (10 boxes of 50)

Performance	
Test Performed	Result (Average)
Differential Pressure per MIL-M36954C	2.0 mm H ₂ O
Latex Particle Challenge (Filtration Efficiency) @ 0.1 micron per ASTM F2299	99.2%

AlphaAir® Face Masks

AlphaAir® Masks

The AlphaAir family of masks is 100% polypropylene and hypoallergenic. Available with tie strings or soft knit ear loops. Particle filtration to 0.1 micron.



BL 5005

AlphaAir® Ear Loop Masks

BL 5005	Blue
GR 5005	Green
PK 5005	Pink
YL 5005	Yellow

500/case (10 boxes of 50)



BL 5100

AlphaAir® Tie Mask

BL 5100	Blue
300/case (6 boxes of 50)	

Face Masks

ShieldMate® Face Mask w/Eye Shield

ShieldMate® Mask w/Eye Shield

This ShieldMate mask and shield combination provides the added security of eye protection. The 5 mil shield is ultrasonically welded to the mask and is anti-fog treated on both sides. The mask also includes an anti-fog foam strip at the nosepiece to eliminate fogging of eyeglasses. The ShieldMate mask incorporates the Magic Arch® support strip, which holds the mask away from the nose and mouth providing a larger, more comfortable breathing chamber without obstruction of downward vision.



BL 8101 S

Performance

Test Performed	Result (Average)
Differential Pressure per MIL-M36954C	2.3 mm H ₂ O
Latex Particle Challenge (Filtration Efficiency) @ 0.1 micron per ASTM F2299	99.0%

ShieldMate® Tie Mask

BL 8101 S	Blue w/ties and anti-fog foam strip
100/case (4 boxes of 25)	

ShieldMate® Face Mask w/Extended Shield

ShieldMate® Mask w/Extended Shield

This 100% polypropylene mask offers .1 micron filtration. Mask design features comfortable latex free earloops and a full-length aluminum nosepiece. Low glare, optically clear, distortion-free shield is 5 mil thick. Wraparound shield has permanent anti-fog treatment on both sides.



SM 2005X

ShieldMate® Mask w/Extended Shield

SM 2005X Blue

100/case (4 boxes of 25)

Combo® Face Masks w/Shield

Combo® Masks w/Shield

The Combo mask & shield is hypoallergenic and fluid resistant with an optically clear shield. The shield is attached to the mask with snaps so it can be removed. The shield is 7 mil with an anti-fog coating, low glare and distortion free. These masks are available with ties or soft knit ear loops.



5194-E

Combo® w/Shield Tie Mask

5194-T Blue

100/case (4 boxes of 25)

Combo® w/Shield Ear Loop Mask

5194-E Blue

100/case (4 boxes of 25)

Coverall® Face Shields

Coverall Face Shields are designed for total facial splash protection. The 7 mil shield is very lightweight and can be worn comfortably for long periods. It can easily fit over glasses. Foam headband fits snugly against the forehead. Double sided anti-fog treatment virtually eliminates fogging. Optically clear with full peripheral vision. Available in full face or half face size, with adjustable Velcro® band or latex free Comfort band elastic head band. All face shields are individually bagged.



2807

Coverall Full Face Shields

2802	Velcro® Adjustable Band
2807	Comfort Band
100/case (4 boxes of 25)	



2803

Coverall Half Face Shields

2803	Velcro® Adjustable Band
2808	Comfort Band
100/case (4 boxes of 25)	

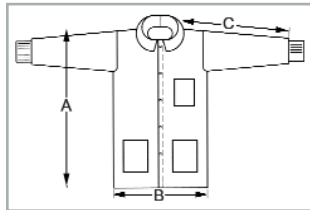
GenPro® Garments

Lightweight and comfortable, GenPro® offers first line protection from exposure to light splashing of fluids. It is an economical general purpose non-woven material that is highly breathable.

Lab Coats - Knit Wrist

White	Size
LC-12632-1	S
LC-12632-2	M
LC-12632-3	L
LC-12632-4	XL
LC-12632-5	2X
LC-12632-6	3X
LC-12632-9	4X

Tapered collar, knit wrist,
3 pockets, snap close
30/case



Dimensions	Size	Body (A)	Chest (B)	Sleeve (C)
	S	36 3/4"	24 1/4"	30"
	M	39 1/2"	25 1/4"	30 1/4"
	L	40"	27"	32 1/2"
	XL	42 3/4"	27 3/4"	33"
	2X	43 1/2"	29 1/2"	37 1/2"
	3X	44 1/2"	30 3/4"	38 1/4"
	4X	46 1/2"	31 1/2"	39 1/4"



SofWear® Garments

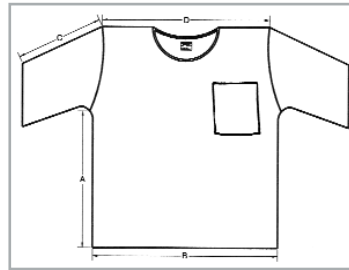
SofWear® scrubs are ideal for environments where street clothes need to be replaced with a low cost disposable clean garment. This material is extremely soft and comfortable against the skin while providing a visible barrier and exceptional breathability keeping you cool and dry.



Scrub Shirts

Blue	Size
WS-71921-1	S
WS-71921-2	M
WS-71921-3	L
WS-71921-4	XL
WS-71921-5	2X
WS-71921-6	3X
WS-71921-7	4X

Round neck,
banded collar,
1 pocket,
safety stitched
30/case

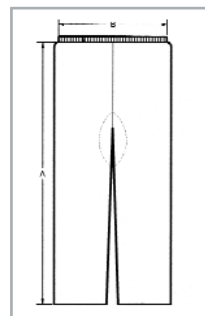


Dimensions	Size	Body (A) From Underarm	Chest (B)	Sleeve (C)	Shoulder (D)
	S	17 1/2"	22 1/2"	6 1/2"	17"
M	17 3/4"	24 1/2"	6 3/4"	18 1/4"	
L	18"	26 1/2"	7 1/4"	19 1/4"	
XL	18 1/2"	27 3/4"	7 3/4"	20 1/2"	
2X	18 3/4"	28 1/2"	8 3/4"	22 1/4"	
3X	19"	30"	9 1/2"	22 3/4"	
4X	19 1/2"	31 3/4"	9 3/4"	24 1/2"	

Scrub Pants

Blue	Size
WP-71322-1	S
WP-71322-2	M
WP-71322-3	L
WP-71322-4	XL
WP-71322-5	2X
WP-71322-6	3X
WP-71322-7	4X

Spandex waist,
1 pocket,
reinforced crotch,
safety stitched
30/case

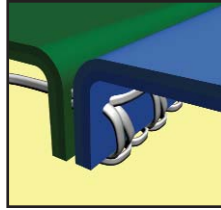


Dimensions	Size	Leg (A)	Waist Relaxed (B)	Waist Stretched (B)
	S	38"	9 1/4"	16 1/2"
M	40 3/4"	10 1/4"	18 1/4"	
L	43"	12"	21 1/2"	
XL	45"	12"	21 1/2"	
2X	45"	12 1/4"	23 1/2"	
3X	46"	14 1/4"	25 1/4"	
4X	46 1/2"	14 1/2"	26"	

Design Excellence in Seam Construction

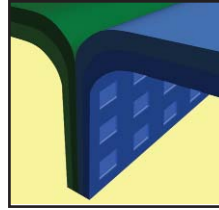
Serged Seams

This seam is produced when the threads are interlocked around the material edges for a strong stress-resistant seam. Overlapping stitching provides strength and durability.



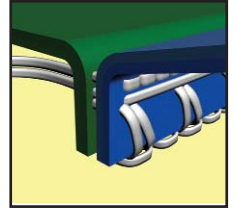
Sonically Welded Seams

This sealed seam has no thread or needle holes. The material is welded together creating an excellent particulate and fluid barrier.

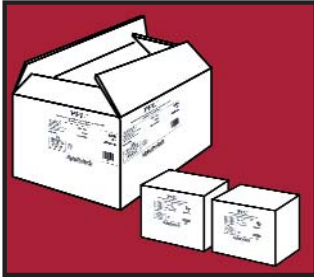


Safety Stitched Seams

An extra safety stitch is added above the serged seam to offer added strength, durability and protection.



Packaging Perfection



Mask Standard Packaging

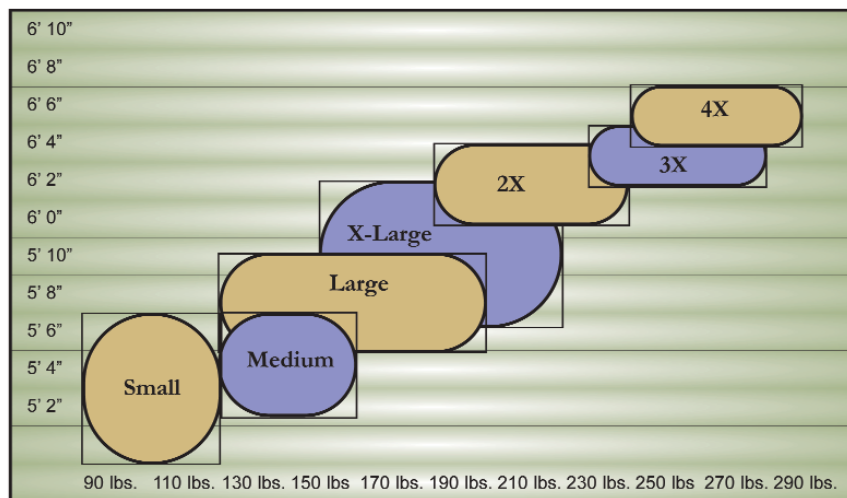
- All products are packaged in dispenser boxes as primary packaging, and a corrugated box as secondary packaging
- Two corner case labels allow product identification from all sides



General Use Packaging Standard

- Polybag as primary packaging
- Carton liner in corrugated box as secondary packaging
- Two corner case labels allow product identification from all sides

Sizing Chart





These garments and associated materials are not suitable for use in some environments containing some chemicals, hazardous agents, and risk of flame and fire. These materials can generate static electricity. It is the user's responsibility to determine the level of risk in a particular environment and the proper personal protective equipment needed. Because conditions of use are out of Alpha Pro Tech's control, Alpha Pro Tech makes no warranties, expressed or implied, and assumes no liability as to the performance of these products for a particular use.

PFL, Combo, CoolOne, Positive Facial Lock, Twist-Seal, MagicArch, ShieldMate, AlphaAir, Coverall, GenPro and SofWear are trademarks of Alpha Pro Tech, Inc.

**Alpha Pro Tech is in the business of protecting people,
product, manufacturing and healthcare environments to
optimize process effectiveness and customer profitability.**

Ordering Information: To place an order, receive a sample or obtain more information, please
contact our Customer Service Department toll-free from
9:00 a.m. to 5:00 p.m. Eastern Time at:

Phone: 800-749-1363

Fax: 905-479-8703

E-mail: sales@alphaprotech.com

International customers please use the following contact information:

Phone: 520-281-0127 Ext. 201

Fax: 520-281-0235

E-mail: ccrespo@alphaprotech.com

Visit us at: www.alphaprotech.com

AlphaProTech[™]
I N C O R P O R A T E D