

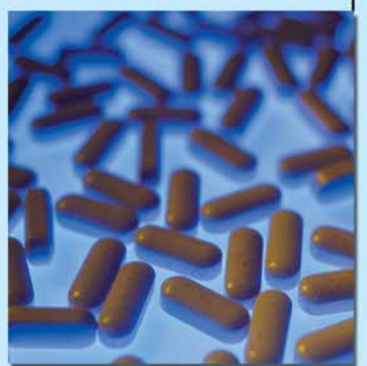
**Critical Cover®**

# AquaTrak®

## Shoe & Boot Covers

Dedicated to the protection of  
people, products and environments™

AlphaProTech  
INCORPORATED



# Critical Cover® AquaTrak® Shoe & Boot Covers

## Amazing Traction in Wet and Dry Conditions

**Features & Benefits:** AquaTrak material keeps you stable and protected in wet and dry conditions. This advanced material was specifically developed for superior performance in wet conditions. The anti-skid properties provide amazing slip and fall protection - with no additional coatings. The material is fluid impervious and styles with sonic welded or heat-sealed seams provide complete protection even in standing water. Serged seam soles provide a great fit and can be used in dry or moist conditions. This durable, low particulate count fabric wears comfortably and completely contains contamination.



AT11111-B  
Heat-Sealed Seams



BT-91412-B  
Sonic Welded Seams



SH-T1182-B  
Serged Seams



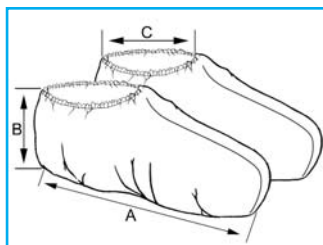
BT-T1X12-B  
Serged Seams

### Heat-Sealed Shoe Covers

<b>Blue</b>	<b>Size</b>
AT11111-B	Univ
AT11112-B	XL
<b>White</b>	<b>Size</b>
AT21111-B	Univ
AT21112-B	XL
<b>Black</b>	<b>Size</b>
AT31111-B	Univ
AT31112-B	XL

Heat-sealed seams,  
fluid impervious,  
75 pair/case

Fluid impervious. Elastic in sole provides added traction and snug fit. Elastic cuff.



Dimensions	Size	Length (A)	Height (B)	Top Relaxed (C)	Top Stretched (C)
	Univ.	15"	7 ½"	5"	10"
XL	17"	7 ½"	6"	12"	

# Critical Cover® AquaTrak® Shoe & Boot Covers

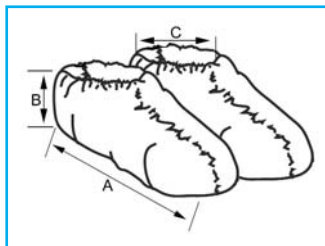
## Serged Seams Seamless Sole Shoe Covers

Blue	Size	Thread Colors
SH-91182-B	Univ	White
SH-91183-B	XL	Black
SH-91184-B	2X	Blue

White	Size	Thread Colors
SH-T1182-B	Univ	White
SH-T1183-B	XL	Black
SH-T1184-B	2X	Blue

Serged seams, seamless sole, butterfly style, non-conductive  
75 pair/case

Fluid impervious material. Seamless sole affords more comfort and durability. Thread colors around the opening provide convenient size



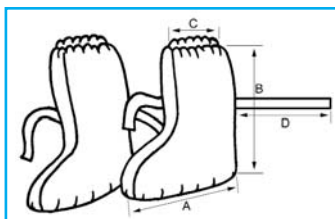
Dimensions	Size	Length (A)	Height (B)	Top Relaxed (C)	Top Stretched (C)
	Univ.	15 1/2"	6 1/2"	4 1/2"	10 1/2"
XL	17"	7"	5"	11"	
2X	19"	7 1/4"	5 1/2"	13"	

## Sonic Welded Seamless Sole Ankle High Boot Covers

Blue	Size	Thread Colors
BT-91412-B	Univ	White
BT-91413-B	XL	Black

Sonic welded seams, serged seam elastic top, ankle ties  
100 pair/case

Fluid impervious material and construction. Ankle ties provide snug fit and security. Seamless sole provides comfort and traction. Serged seam elastic top ensures good closure and support. Thread colors around the opening provide convenient size identification.



Dimensions	Size	Length (A)	Height (B)	Top Relaxed (C)	Top Stretched (C)	Tie Length (D)
	Univ.	15 1/2"	17"	6"	11 1/2"	17"
XL	16"	18"	6 1/2"	12 1/2"	17"	

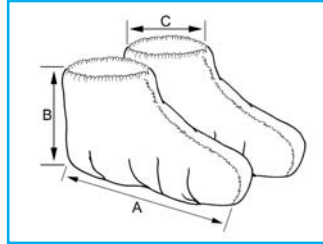
# Critical Cover® AquaTrak® Shoe & Boot Covers

## Serged Seams Ankle High Boot Covers

White	Size	Thread Color
BT-T1X12-B	Univ	White
Blue	Size	Thread Color
BT-91X13-B	XL	Black
Black	Size	Thread Color
BT-C1X14-B	2X	Blue

Elastic all around,  
serged seams  
100 pair/case

Ideal for dry conditions, as well as light surface wetness. Elastic seams provide secure closure and snug fit. Perfect for over steel toe work boots. Thread colors around the opening provide convenient size identification.



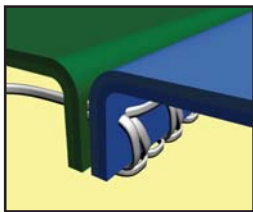
Dimensions	Size	Length (A)	Height (B)	Top Relaxed (C)	Top Stretched (C)
	Univ.	15"	11"	5"	9 1/2"
XL	16 1/2"	11"	5 1/4"	10 1/2"	
2X	18 1/2"	11 1/4"	5 1/2"	11 1/2"	

# Critical Cover® AquaTrak® Shoe & Boot Covers

## Seam Construction

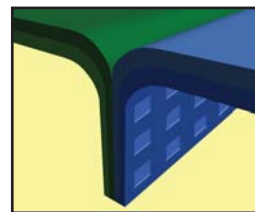
### Serged Seams

This seam is produced when the threads are interlocked around the material edges for a strong stress-resistant seam.



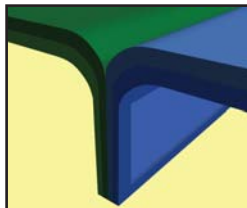
### Ultrasonic Welded Seams

This sealed seam has no thread or needle holes. The material is welded together creating an excellent particle and fluid barrier.



### Heat-Sealed Seams

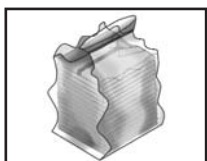
This strong, impervious seam is used when ultrasonic welding is incompatible with the garment material. Used in shoe cover production.



## Packaging Perfection

### *Designed to Limit Contamination Entering Your Environment*

- Packaged in a primary vacuum heat sealed bag, carton liner and outer corrugated carton to prevent cross contamination and contamination migration from one environment to another.
- All garments are precision folded and stacked within the primary bag to permit efficient storage with or without bins.
- All open seams on shipping containers are tape sealed to further prevent contamination.
- Four-sided carton labeling allows easy identification and inventory management.



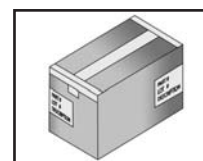
Primary Bag,  
heat sealed



Carton Liner



Open carton with  
taped down liner



Sealed carton with  
two corner labels

# Critical Cover® AquaTrak® Shoe & Boot Covers

Physical Properties	Standard Applied	Test Method	AquaTrak®
	Ball Burst Strength	ASTM D3787 Puncture Strength	Average 23 lb
	BFE (Bacterial Filtration Efficiency)	MIL-M-36954C	99.90%
	COF (Coefficient of Friction)	ASTM D1894 Static Kinetic	0.619 0.607
	Delta P (Differential Pressure)	MIL-M-36954C	mm H <sub>2</sub> O/cm <sup>2</sup> >119
	Grab Tensile Properties	ASTM D751 MD-Tensile Strength TD-Tensile Strength	Average 28 lb 40 lb
	Helmke Drum (unwashed)	IEST-RP-CC003.3	Particles/cubic ft. @ 0.5 micron 62
	Mass/Unit Area	ASTM D751	Average 1.77 oz/sq yd
	Mullen Burst Strength	ASTM D3786 (Modified)	146 psi
	Puncture Propagation Tear Resistance	ASTM D2582 MD-Tensile Strength TD-Tensile Strength	Average 10 lb 9 lb
	Trapezoid Tearing Strength	ASTM D4533 MD-Tensile Strength TD-Tensile Strength	Average 12 lb 17 lb
	Water Resistance Impact Penetration	AATCC Method 42	No Visible Penetration
	Water Vapor Transmission	ASTM E96	Average 0.017 oz/yd <sup>2</sup> /hr

MD - Machine Direction    TD - Transverse Direction

# Critical Cover® AquaTrak® Shoe & Boot Covers

WARNING: These garments and associated materials are not suitable for use in some environments containing certain chemicals and/or hazardous agents. It is the responsibility of the user to determine the level of risk in a particular environment and the proper personal protection equipment needed. Garments manufactured from synthetic non-woven material may generate static electricity. Garments that contain an anti-stat treatment are not intended to be used as a safety feature. These garments are not recommended to be used in a flammable and/or explosive environment. If you have any questions, contact your distributor or Alpha Pro Tech for garment/fabric safety data. The use of this product is out of Alpha Pro Tech's control. Therefore, Alpha Pro Tech makes no warranties, expressed or implied, and assumes no liability as to the performance of these products for a particular use. **CAUTION: AVOID HEAT AND/OR OPEN FLAME.**

## UCC Limited Warranty and Exclusions

**Limited Warranty; Disclaimer and Limitation of Remedies:** The products shall be free from defects in material and workmanship. ALPHA PRO TECH HEREBY EXPRESSLY DISCLAIMS ALL WARRANTIES, EITHER EXPRESSED OR IMPLIED, INCLUDING ANY IMPLIED WARRANTY OF MERCHANTABILITY OR FITNESS FOR A PARTICULAR PURPOSE. Buyer's remedy is expressly limited to replacement of any defective product and Alpha Pro Tech shall have no responsibility for any incidental or consequential damages. Any claims under this warranty must be made in writing to Alpha Pro Tech and must be made with 90 days of the purchase.

Alpha Pro Tech, Inc. reserves the right to change any prices, terms and conditions of sale at any time without any notice.

AquaTrak and Critical Cover are registered trademarks of Alpha Pro Tech, Inc.



---

---

**Alpha Pro Tech is committed to protecting people,  
products, manufacturing and healthcare environments to  
optimize process effectiveness and customer profitability.**

**Ordering Information:** To place an order, receive a sample or obtain more information,  
please contact our Customer Service Department toll-free from  
9:00 a.m. to 5:00 p.m. Eastern Time at:

Phone: 800-749-1363

Fax: 905-479-8703

E-mail: [sales@alphaprotech.com](mailto:sales@alphaprotech.com)

**International customers please use the following contact information:**

Phone: 520-281-0127 Ext. 201

Fax: 520-281-0235

E-mail: [ccrespo@alphaprotech.com](mailto:ccrespo@alphaprotech.com)

**Visit us at: [www.alphaprotech.com](http://www.alphaprotech.com)**

***Critical Cover***<sup>®</sup>

**AlphaProTech**  
INCORPORATED