



Critical Cover®

GenPro® Garments

Dedicated to the protection of
people, products and environments™

AlphaProTech
INCORPORATED



Critical Cover® GenPro® Garments

Basic Protection for Non-Hazardous Environments

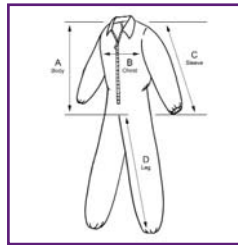
Designed for non-hazardous, general purpose environments and with exceptional breathability and moderate barrier protection, GenPro garments are ideal for your personnel as well as for visitors to your facility. The lightweight, durable material lets you stay clean and comfortable all day while providing a limited barrier to particulates and contamination. It is the perfect solution for protecting your clothes while offering comfort and breathability.

Our GenPro shoe covers and high top boot covers are lightweight and provide a moderate barrier to fluids, particulates and contamination. Our GenPro bouffants and beard covers with a non-binding, latex-free elastic opening for a perfect and secure fit, provide the appropriate level of protection required to contain particles resulting from the head area.

Coveralls

| White | Size |
|------------|------|
| CV-14032-2 | M |
| CV-14032-3 | L |
| CV-14032-4 | XL |
| CV-14032-5 | 2X |
| CV-14032-6 | 3X |
| CV-14032-7 | 4X |
| CV-14032-8 | 5X |

Elastic wrist,
ankle & back
25/case



| Dimensions | Size | Body (A) | Chest (B) | Sleeve (C) | Leg (D) |
|------------|------|----------|-----------|------------|---------|
| | M | 37 1/2" | 24 1/4" | 34" | 28 1/2" |
| | L | 38 3/4" | 25" | 34" | 29 1/2" |
| | XL | 40" | 27" | 36 1/2" | 30" |
| | 2X | 40 1/2" | 29 3/4" | 37" | 31" |
| | 3X | 43" | 32" | 38" | 32" |
| | 4X | 43" | 32 1/2" | 41" | 32 1/2" |
| | 5X | 43 1/2" | 33 1/2" | 42" | 33" |



Lab Coats - Elastic Wrist

| White | Size |
|------------|------|
| LC-12421-1 | S |
| LC-12421-2 | M |
| LC-12421-3 | L |
| LC-12421-4 | XL |
| LC-12421-5 | 2X |
| LC-12421-6 | 3X |
| LC-12421-9 | 4X |

Tapered collar, elastic wrist,
no pockets, snap close
25/case



| Dimensions | Size | Body (A) | Chest (B) | Sleeve (C) |
|------------|------|----------|-----------|------------|
| | S | 36 3/4" | 24 1/4" | 30" |
| | M | 39 1/2" | 25 1/4" | 30 1/4" |
| | L | 40" | 27" | 32 1/2" |
| | XL | 42 3/4" | 27 3/4" | 33" |
| | 2X | 43 1/2" | 29 1/2" | 37 1/2" |
| | 3X | 44 1/2" | 30 3/4" | 38 1/4" |
| | 4X | 46 1/2" | 31 1/2" | 39 1/4" |

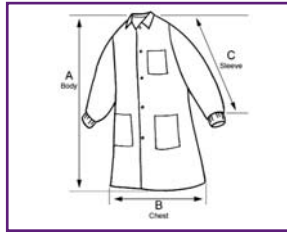


Critical Cover® GenPro® Garments

Lab Coats - Knit Wrist

| White | Size |
|------------|------|
| LC-12632-1 | S |
| LC-12632-2 | M |
| LC-12632-3 | L |
| LC-12632-4 | XL |
| LC-12632-5 | 2X |
| LC-12632-6 | 3X |

Tapered collar, knit wrist,
3 pockets, snap close
30/case



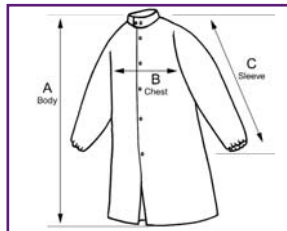
| Dimensions | Size | Body (A) | Chest (B) | Sleeve (C) |
|------------|------|----------|-----------|------------|
| | S | 36 ¾" | 24 ¼" | 30" |
| | M | 39 ½" | 25 ¼" | 30 ¼" |
| | L | 40" | 27" | 32 ½" |
| | XL | 42 ¾" | 27 ¾" | 33" |
| | 2X | 43 ½" | 29 ½" | 37 ½" |
| | 3X | 44 ½" | 30 ¾" | 38 ¼" |



Frocks - Snap Close

| White | Size |
|------------|------|
| FK-12122-1 | S |
| FK-12122-2 | M |
| FK-12122-3 | L |
| FK-12122-4 | XL |
| FK-12122-5 | 2X |
| FK-12122-6 | 3X |

Raglan sleeve, elastic wrist,
snap collar, snap close
30/case



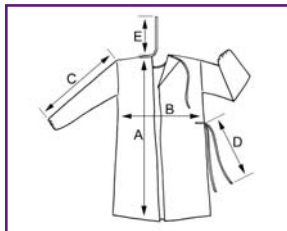
| Dimensions | Size | Body (A) | Chest (B) | Sleeve (C) |
|------------|------|----------|-----------|------------|
| | S | 40 ½" | 21 ¾" | 33 ½" |
| | M | 42 ½" | 22 ¾" | 34 ½" |
| | L | 43 ½" | 23 ½" | 35 ½" |
| | XL | 46" | 24 ¾" | 36 ½" |
| | 2X | 47 ½" | 26 ½" | 37 ½" |
| | 3X | 51 ½" | 29" | 40" |



Gowns

| Yellow | Size |
|------------|------|
| GN-13124-3 | Univ |
| GN-13124-4 | XL |

Full coverage,
elastic wrist, banded ties
at neck & waist
50/case



| Dimensions | Size | Body (A) | Chest (B) | Sleeve (C) | Waist Tie Length (D) | Neck Tie Length (E) |
|------------|------|----------|-----------|------------|----------------------|---------------------|
| | Univ | 45" | 27" | 23" | 29 ½" | 11" |
| | XL | 47 ¼" | 30" | 24 ¾" | 29 ½" | 11" |

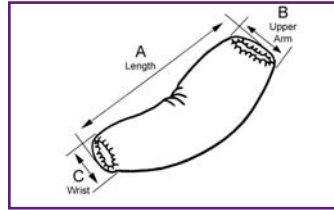


Critical Cover® GenPro® Garments

Sleeves

White **Size**
MS-01135-8 Univ

Tapered sleeve,
elastic both ends,
serged seams
200/case



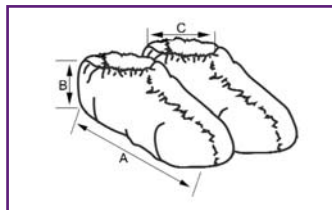
Dimensions

| Size | Length (A) | Upper Arm (Relaxed) (B) | Upper Arm (Stretched) (B) | Wrist (Relaxed) (C) | Wrist (stretched) (C) |
|------|------------|-------------------------|---------------------------|---------------------|-----------------------|
| Univ | 19 1/2" | 4 1/2" | 9 3/4" | 3 1/4" | 5 3/4" |

Shoe Covers Serged Seams

Blue **Size** **Thread Color**
SH-61222-B Univ White
SH-61223-B XL Black

Elastic inside,
serged seams
150 pair/case



Dimensions

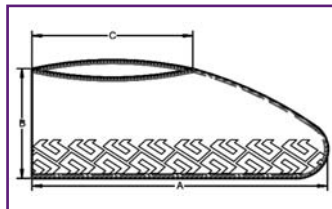
| Size | Length (A) | Height (B) | Top (Relaxed) (C) | Top (Stretched) (C) |
|------|------------|------------|-------------------|---------------------|
| Univ | 15 3/4" | 7" | 4 1/2" | 10 3/4" |
| XL | 17 1/2" | 7" | 5" | 12" |

Shoe Covers Anti-Skid

Blue **Size** **Thread Color**
SH-71222-B Univ White
SH-71223-B XL Black

Anti-skid adhesive on sole,
serged seams
150 pair/case

*These shoe covers contain natural latex rubber.



Dimensions

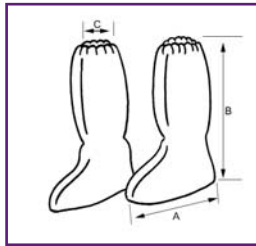
| Size | Length (A) | Height (B) | Top (Relaxed) (C) | Top (Stretched) (C) |
|------|------------|------------|-------------------|---------------------|
| Univ | 15 3/4" | 7" | 4 1/2" | 10 3/4" |
| XL | 17 1/2" | 7" | 5" | 12" |

Critical Cover® GenPro® Garments

Boot Covers Serged Seams

| White | Size | Thread Color |
|------------|-------|--------------|
| BT-B1L16-B | L | Orange |
| BT-B1L12-B | Univ. | White |
| BT-B1L13-B | XL | Black |

Elastic top, serged seams
100 pair/case

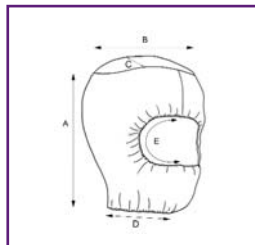


| Dimensions | Size | Length (A) | Height (B) | Top Relaxed (C) | Top Stretched (C) |
|------------|-------|------------|------------|-----------------|-------------------|
| | L | 13" | 20 ½" | 5 ½" | 12 ½" |
| | Univ. | 14 ¼" | 21 ¼" | 5 ½" | 12 ½" |
| | XL | 15 ½" | 22 ½" | 5 ½" | 12 ½" |

Hood All Elastic

| Part No. | Size | Color |
|------------|-------|-------|
| SD-91C32-B | Univ. | White |
| SD-92C32-B | Univ. | Blue |

Bouffant & beard cover combo
lightweight, latex-free
500/case

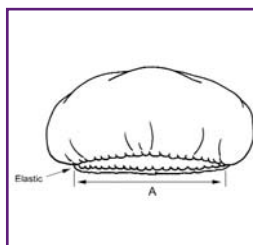


| Dimensions | Size | Height (A) | Width (B) | Depth (C) | Neck (Stretched) (D) | Neck (Relaxed) (D) | Face (Stretched) (E) | Face (Relaxed) (E) |
|------------|------|------------|-----------|-----------|----------------------|--------------------|----------------------|--------------------|
| | Univ | 10 ¼" | 6" | 9 ¼" | 13" | 5 ¾" | 12 ½" | 5" |

Bouffants

| White | Size |
|------------|------|
| BO-13821-B | 21" |
| BO-13824-B | 24" |
| BO-13826-B | 26" |

Lightweight, elastic band,
latex-free
1,000/case



| Dimensions | Diameter (Relaxed) (A) | Diameter (Stretched) (A) |
|------------|------------------------|--------------------------|
| | 8" | 21" |
| | 8 ½" | 24" |
| | 9" | 26" |

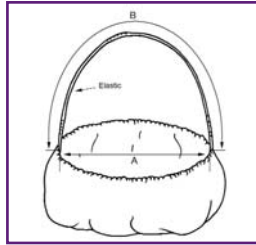
Critical Cover® GenPro® Garments

Beard Cover

White
MS-14138-8

Size
Univ

Lightweight,
elastic band, latex free
1,000/case

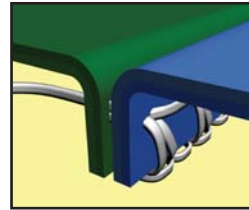


| Dimensions | Size | Diameter (Relaxed) (A) | Diameter (Stretched) (A) | Headband (Stretched) (B) |
|------------|------|------------------------|--------------------------|--------------------------|
| | | Univ | 6" | 10" |

Seam Construction

Serged Seams

This seam is produced when the threads are interlocked around the material edges for a strong stress-resistant seam.



Packaging Perfection

Designed to Limit Contamination Entering Your Environment

- Packaged in a primary vacuum heat sealed bag, carton liner and outer corrugated carton to prevent cross contamination and contamination migration from one environment to another.
- All open seams on shipping containers are tape sealed to further prevent contamination.
- Four-sided carton labeling allows easy identification and inventory management.



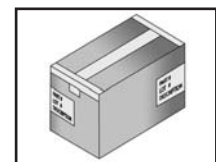
Primary Bag, heat sealed



Carton Liner



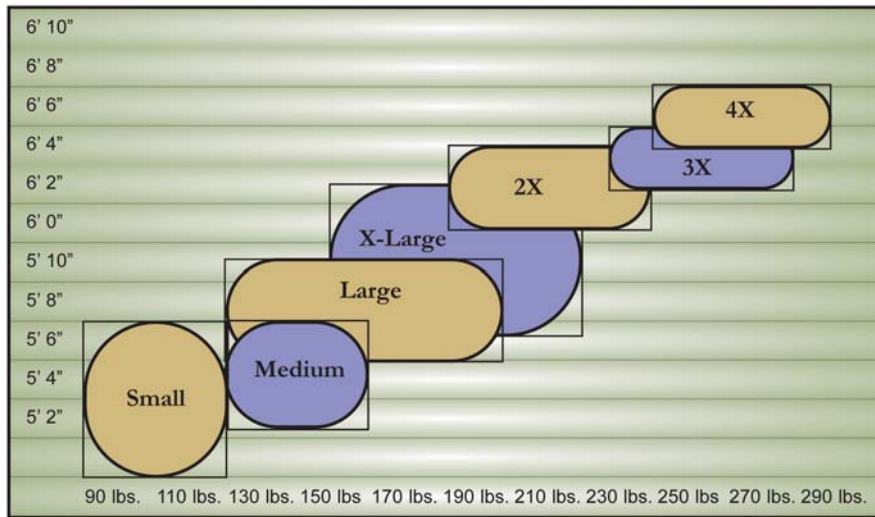
Open carton with taped down liner



Sealed carton with two corner labels

Critical Cover[®] GenPro[®] Garments

Sizing Chart



Please contact us for other sizing



Except where noted

WARNING: These garments and associated materials are not suitable for use in some environments containing certain chemicals and/or hazardous agents. It is the responsibility of the user to determine the level of risk in a particular environment and the proper personal protection equipment needed. Garments manufactured from synthetic non-woven material may generate static electricity. Garments that contain an anti-stat treatment are not intended to be used as a safety feature. These garments are not recommended to be used in a flammable and/or explosive environment. If you have any questions, contact your distributor or Alpha Pro Tech for garment/fabric safety data. The use of this product is out of Alpha Pro Tech's control. Therefore, Alpha Pro Tech makes no warranties, expressed or implied, and assumes no liability as to the performance of these products for a particular use. **CAUTION: AVOID HEAT AND/OR OPEN FLAME.**

UCC Limited Warranty and Exclusions

Limited Warranty; Disclaimer and Limitation of Remedies: The products shall be free from defects in material and workmanship. ALPHA PRO TECH HEREBY EXPRESSLY DISCLAIMS ALL WARRANTIES, EITHER EXPRESSED OR IMPLIED, INCLUDING ANY IMPLIED WARRANTY OF MERCHANTABILITY OR FITNESS FOR A PARTICULAR PURPOSE. Buyer's remedy is expressly limited to replacement of any defective product and Alpha Pro Tech shall have no responsibility for any incidental or consequential damages. Any claims under this warranty must be made in writing to Alpha Pro Tech and must be made with 90 days of the purchase.

Alpha Pro Tech, Inc. reserves the right to change any prices, terms and conditions of sale at any time without any notice.

Critical Cover and GenPro are registered trademarks of Alpha Pro Tech, Inc

**Alpha Pro Tech is committed to protecting people,
products, manufacturing and healthcare environments to
optimize process effectiveness and customer profitability.**

Ordering Information: To place an order, receive a sample or obtain more information,
please contact our Customer Service Department toll-free from
9:00 a.m. to 5:00 p.m. Eastern Time at:

Phone: 800-749-1363

Fax: 905-479-8703

E-mail: sales@alphaprotech.com

International customers please use the following contact information:

Phone: 520-281-0127 Ext. 201

Fax: 520-281-0235

E-mail: ccrespo@alphaprotech.com

Visit us at: www.alphaprotech.com

Critical Cover[®]

AlphaProTech
INCORPORATED