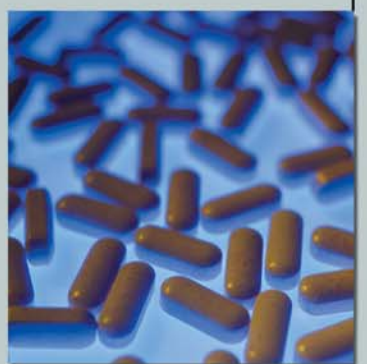


Critical Cover®

Lab Animal Research Products

Dedicated to the protection of
people, products and environments™

AlphaProTech
INCORPORATED



LAR Products

The Complete Source for All Your Apparel Needs

Comfortable and cost effective protection of people, product and environments is made easy with material innovation from Alpha Pro Tech.

This brochure offers a comprehensive overview of products that will meet the demanding needs of your Laboratory Animal Research environment.

Establishing a primary supply source for your Lab Animal Research products requires the careful consideration of factors like quality, price, reliability and service. We are committed to being more than a source of products and services to our customers; we will provide solutions to meet your particular requirements and your changing needs. All of our products are latex free, except where noted.

Apparel

ComforTech® Garments

Superior Protection Without Sacrificing Comfort

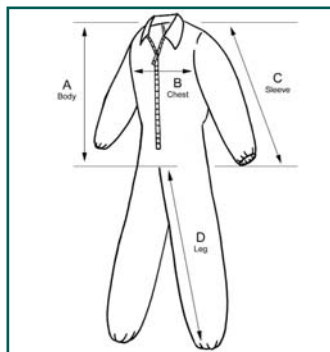
Features & Benefits: ComforTech garments are constructed of an innovative, lightweight, durable material that delivers excellent protection against particles, biologicals, fluids and a host of chemicals. To keep you cool and comfortable throughout the work day, the material rapidly dissipates vapor and

heat on a microscopic level. And for those environments where static build-up is a risk, our material is static dissipative helping protect your products and processes.

Coveralls

White	Size
CV-J4022-1	S
CV-J4022-2	M
CV-J4022-3	L
CV-J4022-4	XL
CV-J4022-5	2X
CV-J4022-6	3X
CV-J4022-7	4X
CV-J4022-8	5X

Elastic wrist & ankle,
serged seams
25/case



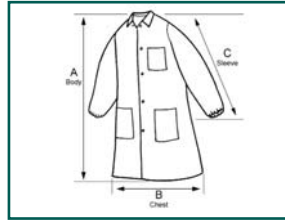
Dimensions	Size	Body (A)	Chest (B)	Sleeve (C)	Leg (D)
	S	36 1/2"	23"	32 1/2"	28"
	M	37 1/2"	24 1/4"	34"	28 1/2"
	L	38 3/4"	25"	34"	29 1/2"
	XL	40"	27"	36 1/2"	30"
	2X	40 1/2"	29 3/4"	37"	31"
	3X	43"	32"	38"	32"
	4X	43"	32 1/2"	41"	32 1/2"
	5X	43 1/2"	33 1/2"	42"	33"

LAR Products

Lab Coats - Elastic Wrist

White	Size
LC-J2621-1	S
LC-J2621-2	M
LC-J2621-3	L
LC-J2621-4	XL
LC-J2621-5	2X
LC-J2621-6	3X
LC-J2621-9	4X

Tapered collar, elastic wrist,
3 pockets, snap close,
serged seams
25/case



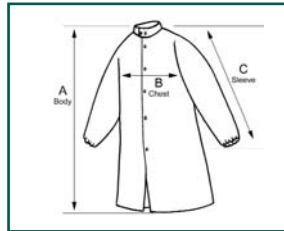
Dimensions	Size	Body (A)	Chest (B)	Sleeve (C)
	S	36 3/4"	24 1/4"	30"
	M	39 1/2"	25 1/4"	30 1/4"
	L	40"	27"	32 1/2"
	XL	42 3/4"	27 3/4"	33"
	2X	43 1/2"	29 1/2"	37 1/2"
	3X	44 1/4"	30 3/4"	38 1/4"
	4X	46 1/2"	31 1/2"	39 1/4"



Frocks - Snap Close

White	Size
FK-J2121-1	S
FK-J2121-2	M
FK-J2121-3	L
FK-J2121-4	XL
FK-J2121-5	2X
FK-J2121-6	3X
FK-J2121-7	4X
FK-J2121-8	5X

Raglan sleeve, elastic wrist,
snap collar, snap close,
serged seams
25/case



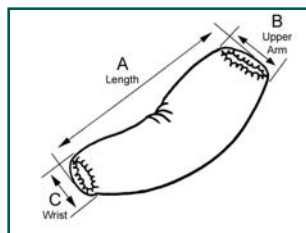
Dimensions	Size	Body (A)	Chest (B)	Sleeve (C)
	S	36 3/4"	24 1/4"	30"
	M	39 1/2"	25 1/4"	30 1/4"
	L	40"	27"	32 1/2"
	XL	42 3/4"	27 3/4"	33"
	2X	43 1/2"	29 1/2"	37 1/2"
	3X	44 1/4"	30 3/4"	38 1/4"
	4X	46 1/2"	31 1/2"	39 1/4"
	5X	53 1/2"	30"	42"



Sleeve

White	Size
MS-01J06-8	Univ.
MS-01J06-4	XL

Tapered sleeve,
elastic both ends,
sonic welded seams
300/case



Dimensions	Size	Length (A)	Upper Arm (Relaxed) (B)	Upper Arm (Stretched) (B)	Wrist (Relaxed) (C)	Wrist (Stretched) (C)
	Univ.	19 1/2"	4 1/2"	9 3/4"	3 1/4"	5 3/4"
	XL	21 1/2"	5"	10 1/2"	3 1/2"	6"

LAR Products

AlphaGuard® Garments

Unique Blend of Strength, Comfort and Protective Qualities

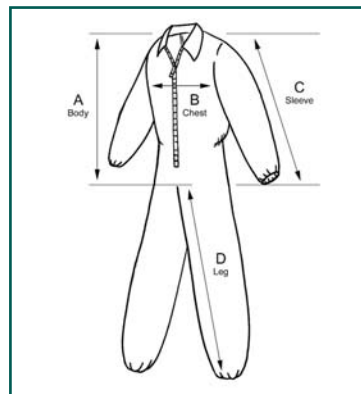
Features & Benefits: AlphaGuard fabric, the result of leading-edge technologies, offers a unique mix of benefits. The material's excellent breathability yet high filtration efficiency puts the wearer in a cool, comfortable "suited" environment without compromising your environment.

A low particle count adds another measure of environmental protection. For total comfort, the fabric is among the softest in its product class. AlphaGuard material is fluid repellent but not recommended for use with chemicals. The static dissipative material is recommended for use where static-build-up is a risk.

Coveralls

White	Size	Blue
N/A	S	CV-84032-1
CV-74032-2	M	CV-84032-2
CV-74032-3	L	CV-84032-3
CV-74032-4	XL	CV-84032-4
CV-74032-5	2X	CV-84032-5
CV-74032-6	3X	CV-84032-6
CV-74032-7	4X	CV-84032-7
CV-74032-8	5X	CV-84032-8

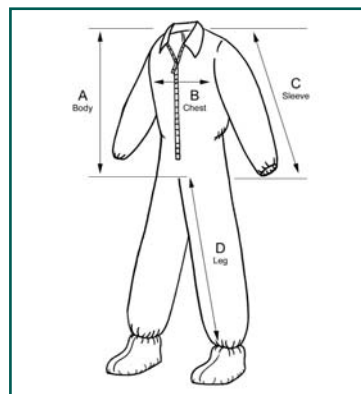
Elastic wrist, ankle & back,
serged seams
25/case



Coveralls

White	Size
CV-74832-1	S
CV-74832-2	M
CV-74832-3	L
CV-74832-4	XL
CV-74832-5	2X
CV-74832-6	3X
CV-74832-7	4X
CV-74832-8	5X

Elastic wrist, ankle & back,
AquaTrak® boots, serged seams
25/case



Dimensions	Size	Body (A)	Chest (B)	Sleeve (C)	Leg (D)
	S	36 1/2"	23"	32 1/2"	28"
M	37 1/2"	24 1/4"	34"	28 1/2"	
L	38 3/4"	25"	34"	29 1/2"	
XL	40"	27"	36 1/2"	30"	
2X	40 1/2"	29 3/4"	37"	31"	
3X	43"	32"	38"	32"	
4X	43"	32 1/2"	41"	32 1/2"	
5X	43 1/2"	33 1/2"	42"	33"	

LAR Products

Lab Coats - Knit Wrist

White	Size	Blue
LC-32632-1	S	LC-31632-1
LC-32632-2	M	LC-31632-2
LC-32632-3	L	LC-31632-3
LC-32632-4	XL	LC-31632-4
LC-32632-5	2X	LC-31632-5
LC-32632-6	3X	LC-31632-6
LC-32632-9	4X	LC-31632-9

Tapered collar, knit wrist,
3 pockets, snap close,
serged seams
30/case



Dimensions	Size	Body (A)	Chest (B)	Sleeve (C)
	S	36 3/4"	24 1/4"	30"
	M	39 1/2"	25 1/4"	30 1/4"
	L	40"	27"	32 1/2"
	XL	42 3/4"	27 3/4"	33"
	2X	43 1/2"	29 1/2"	37 1/2"
	3X	44 1/4"	30 3/4"	38 1/4"
	4X	46 1/2"	31 1/2"	39 1/4"



Lab Coats - Elastic Wrist

White	Size
LC-32622-1	S
LC-32622-2	M
LC-32622-3	L
LC-32622-4	XL
LC-32622-5	2X
LC-32622-6	3X
LC-32622-9	4X

Tapered collar, elastic wrist,
3 pockets, snap close,
serged seams
25/case



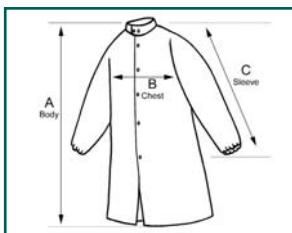
Dimensions	Size	Body (A)	Chest (B)	Sleeve (C)
	S	36 3/4"	24 1/4"	30"
	M	39 1/2"	25 1/4"	30 1/4"
	L	40"	27"	32 1/2"
	XL	42 3/4"	27 3/4"	33"
	2X	43 1/2"	29 1/2"	37 1/2"
	3X	44 1/4"	30 3/4"	38 1/4"
	4X	46 1/2"	31 1/2"	39 1/4"



Frocks - Elastic Wrist

White	Size	Blue
FK-32122-1	S	FK-31122-1
FK-32122-2	M	FK-31122-2
FK-32122-3	L	FK-31122-3
FK-32122-4	XL	FK-31122-4
FK-32122-5	2X	FK-31122-5
FK-32122-6	3X	FK-31122-6
FK-32122-7	4X	FK-31122-7

Raglan sleeve, elastic wrist,
snap collar, snap close,
serged seams
30/case



Dimensions	Size	Body (A)	Chest (B)	Sleeve (C)
	S	40 1/2"	21 3/4"	33 1/2"
	M	42 1/2"	22 3/4"	34 1/2"
	L	43 1/2"	23 1/2"	35 1/2"
	XL	46"	24 3/4"	36 1/2"
	2X	47 1/2"	26 1/2"	37 1/2"
	3X	51 1/2"	29"	40"
	4X	52 1/2"	29 1/2"	41"

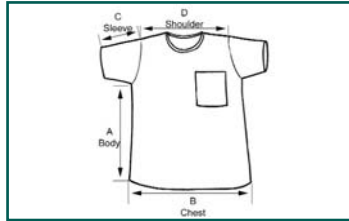


LAR Products

Scrub Shirts - Short Sleeve

Blue	Size
WS-23921-1	S
WS-23921-2	M
WS-23921-3	L
WS-23921-4	XL
WS-23921-5	2X
WS-23921-6	3X
WS-23921-7	4X

Round neck, banded collar, one pocket, safety stitched
30/case



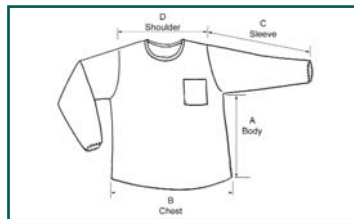
Dimensions	Size	Body (A)	Chest (B)	Sleeve (C)	Shoulder (D)
	S	17 1/2"	22 1/2"	6 1/2"	17"
	M	17 3/4"	24 1/2"	6 3/4"	18 1/4"
	L	18"	26 1/2"	7 1/4"	19 1/4"
	XL	18 1/2"	27 3/4"	7 3/4"	20 1/2"
	2X	18 3/4"	28 1/2"	8 3/4"	22 1/4"
	3X	19"	30"	9 1/2"	22 3/4"
	4X	19 1/2"	31 3/4"	9 3/4"	24 1/2"



Scrub Shirts - Long Sleeve

Blue	Size
WS-23221-1	S
WS-23221-2	M
WS-23221-3	L
WS-23221-4	XL
WS-23221-5	2X
WS-23221-6	3X
WS-23221-7	4X

Round neck, banded collar, elastic wrist, one pocket, safety stitched
30/case



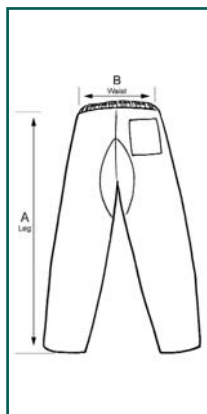
Dimensions	Size	Body (A)	Chest (B)	Sleeve (C)	Shoulder (D)
	S	17 1/2"	22 1/2"	20 1/2"	17"
	M	17 3/4"	24 1/2"	21 1/2"	18 1/4"
	L	18"	26 1/2"	22 3/4"	19 1/4"
	XL	18 1/2"	27 3/4"	24 1/4"	20 1/2"
	2X	18 3/4"	28 1/2"	25 3/4"	22 1/4"
	3X	19"	30"	27"	22 3/4"
	4X	19 1/2"	31 3/4"	28 1/2"	24 1/2"



Scrub Pants

Blue	Size
WP-23322-1	S
WP-23322-2	M
WP-23322-3	L
WP-23322-4	XL
WP-23322-5	2X
WP-23322-6	3X
WP-23322-7	4X

Spandex waist, 1 pocket, reinforced crotch, safety stitched seams
30/case



Dimensions	Size	Leg (A)	Waist Relaxed (B)	Waist Stretched (B)
	S	38"	9 1/4"	16 1/2"
	M	40 3/4"	10 1/4"	18 1/4"
	L	43"	12"	21 1/2"
	XL	45"	12"	21 1/2"
	2X	45"	12 1/4"	23 1/2"
	3X	46"	14 1/4"	25 1/4"
	4X	46 1/2"	14 1/2"	26"

LAR Products

GenPro® Garments

First Choice for Dry, Non-Hazardous Areas

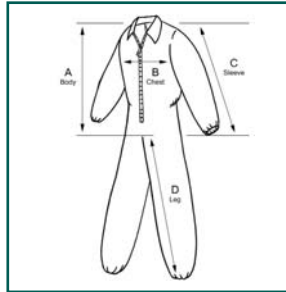
Economical GenPro® garments are ideal for workers and guests in non-hazardous environments. The lightweight, durable material lets the wearer stay clean

and comfortable all day while providing a limited barrier to particulates and contamination.

Coveralls

White	Size
CV-14032-1	S
CV-14032-2	M
CV-14032-3	L
CV-14032-4	XL
CV-14032-5	2X
CV-14032-6	3X
CV-14032-7	4X
CV-14032-8	5X

Elastic wrist, ankle & back, serged seams
25/case



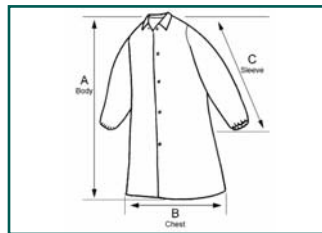
Dimensions	Size	Body (A)	Chest (B)	Sleeve (C)	Leg (D)
	S	36 1/2"	23"	32 1/2"	28"
	M	37 1/2"	24 1/4"	34"	28 1/2"
	L	38 3/4"	25"	34"	29 1/2"
	XL	40"	27"	36 1/2"	30"
	2X	40 1/2"	29 3/4"	37"	31"
	3X	43"	32"	38"	32"
	4X	43"	32 1/2"	41"	32 1/2"
	5X	43 1/2"	33 1/2"	42"	33"



Lab Coats - Elastic Wrist

White	Size
LC-12421-1	S
LC-12421-2	M
LC-12421-3	L
LC-12421-4	XL
LC-12421-5	2X
LC-12421-6	3X
LC-12421-9	4X

Tapered collar, elastic wrist, no pockets, snap close serged seams
25/case



Dimensions	Size	Body (A)	Chest (B)	Sleeve (C)
	S	36 3/4"	24 1/4"	30"
	M	39 1/2"	25 1/4"	30 1/4"
	L	40"	27"	32 1/2"
	XL	42 3/4"	27 3/4"	33"
	2X	43 1/2"	29 1/2"	37 1/2"
	3X	44 1/4"	30 3/4"	38 1/4"
	4X	46 1/2"	31 1/2"	39 1/4"



LAR Products

Lab Coats - Knit Wrist

White	Size
LC-12632-1	S
LC-12632-2	M
LC-12632-3	L
LC-12632-4	XL
LC-12632-5	2X
LC-12632-6	3X

Tapered collar, knit wrist,
3 pockets, snap close,
serged seams
30/case



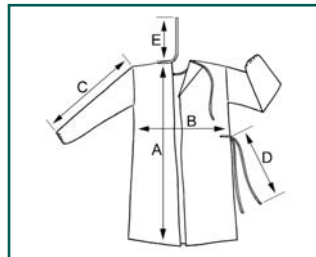
Dimensions	Size	Body (A)	Chest (B)	Sleeve (C)
	S	36 3/4"	24 1/4"	30"
	M	39 1/2"	25 1/4"	30 1/4"
	L	40"	27"	32 1/2"
	XL	42 3/4"	27 3/4"	33"
	2X	43 1/2"	29 1/2"	37 1/2"
	3X	44 1/2"	30 3/4"	38 1/4"



Gowns

Yellow	Size
GN-13124-3	Univ
GN-13124-4	XL

Full coverage,
elastic wrist, banded ties
at neck & waist,
serged seams
50/case



Dimensions	Size	Body (A)	Chest (B)	Sleeve (C)	Waist Tie Length (D)	Neck Tie Length (E)
	Univ	45"	27"	23"	29 1/2"	11"
	XL	47 1/4"	30"	24 3/4"	29 1/2"	11"



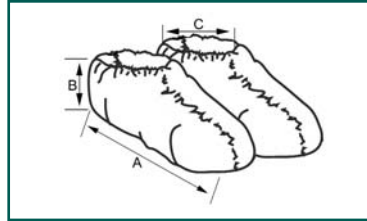
LAR Products

GenPro® Shoe Covers

Shoe Covers Serged Seams

Blue	Size	Thread Color
SH-61222-B	Univ	White
SH-61223-B	XL	Black

Serged seams
150 pair/case

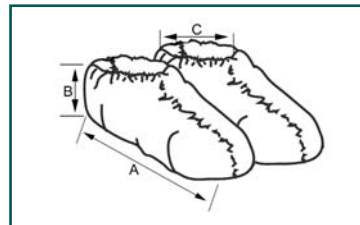


Dimensions	Size	Length (A)	Height (B)	Top (Relaxed) (C)	Top (Stretched) (C)
	Univ	15 ¾"	7"	4 ½"	10 ¾"
XL	17 ½"	7"	5"	12"	

Shoe Covers Anti-Skid

Blue	Size	Thread Color
SH-71222-B	Univ	White
SH-71223-B	XL	Black

Adhesive strip on sole,
serged seams, contains natural
latex rubber
150 pair/case



Dimensions	Size	Length (A)	Height (B)	Top (Relaxed) (C)	Top (Stretched) (C)
	Univ	15 ¾"	7"	4 ½"	10 ¾"
XL	17 ½"	7"	5"	12"	

Shoe & Boot Covers

AquaTrak® Shoe Covers

Outstanding Performance in Wet Conditions

Features & Benefits: AquaTrak® material keeps you stable and protected in wet and dry conditions. This advanced material was specifically developed for superior performance in wet conditions. The anti-skid properties provide amazing slip and fall protection - with no additional coatings. The material is fluid

impervious and styles with heat-sealed soles provide complete protection even in standing water. Serged seam soles provide a great fit and can be used in dry or moist conditions. This durable, low particulate count fabric wears comfortably and completely contains contamination.

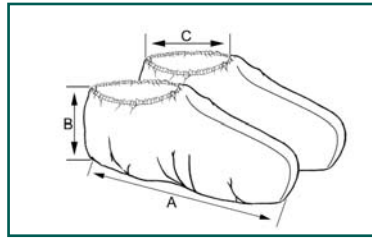
Shoe Covers Heat-Sealed

Blue **Size**
AT11111-B Univ
AT11112-B XL

White **Size**
AT21111-B Univ
AT21112-B XL

Black **Size**
AT31111-B Univ
AT31112-B XL

Fluid impervious,
heat-sealed seams,
75 pair/case



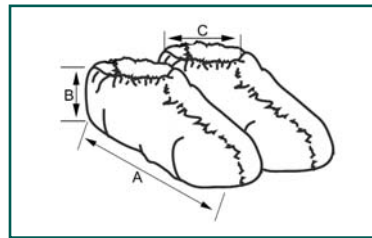
Dimensions	Size	Length (A)	Height (B)	Top Relaxed (C)	Top Stretched (C)
	Univ.	15"	7 ½"	5"	10 ¼"
XL	17 ¾"	7 ½"	6"	11 ½"	

Shoe Covers Seamless Sole

White **Size** **Thread Colors**
SH-T1182-B Univ White
SH-T1183-B XL Black
SH-T1184-B 2X Blue

Blue **Size** **Thread Colors**
SH-91182-B Univ White
SH-91183-B XL Black
SH-91184-B 2X Blue

Fluid impervious,
butterfly style, serged seams
75 pair/case



Dimensions	Size	Length (A)	Height (B)	Top Relaxed (C)	Top Stretched (C)
	Univ.	15 ½"	6 ½"	4 ½"	10 ½"
XL	17"	7"	5"	11"	
2X	19"	7 ¼"	5 ½"	13"	

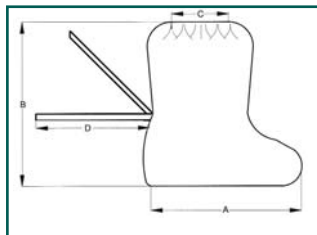
LAR Products

AquaTrak® Boot Covers

Boot Covers Seamless Sole Ankle High

Blue	Size	Thread Colors
BT-91412-B	Univ	White
BT-91413-B	XL	Black

Fluid impervious, elastic top, ankle ties, seamless sole, sonic welded seams
100 pair/case



Dimensions	Size	Length (A)	Height (B)	Top Relaxed (C)	Top Stretched (C)	Tie Length (D)
	Univ.	15 1/2"	17"	6"	11 1/2"	17"
XL	16"	18"	6 1/2"	12 1/2"	17"	

SureGrip™ Shoe Covers

Multiple Style Options for Maximum Versatility

Features and Benefits: These general purpose, top value shoe covers work great on a wide range of floor surfaces. The ultra low particle count SureGrip™ material is extremely clean and exhibits excellent durability and anti-skid properties - without adding any extra material to the sole that could add to contamination concerns.

Multiple style options add to the versatility of this product: serged seams for added traction and snug fit; heat-sealed seam for absolute particulate and biological containment.

The Gaylord packaging option which ships and stores 30 cases standard, can save you money in labor, time and waste management fees.

Shoe Covers Serged Seams

Blue	Size	Thread Colors
SH-X1222-B	Univ.	White
SH-X1223-B	XL	Black
SH-X1224-B	2X	Blue

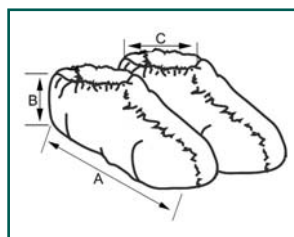
150 pair/case

Gaylord Packaging

Blue	Size	Thread Colors
SH-X1272-B	Univ.	White
SH-X1273-B	XL	Black
SH-X1274-B	2X	Blue

4,500 pair/case

Non-skid, thread colors for size identification, serged seams



Dimensions	Size	Length (A)	Height (B)	Top Relaxed (C)	Top Stretched (C)
	Univ.	15 1/2"	6 1/4"	4 1/2"	9 1/2"
XL	17"	6 1/2"	5"	11 1/2"	
2X	18 1/2"	6 3/4"	5 1/2"	12 1/2"	

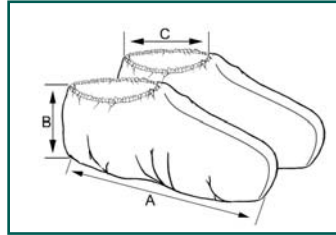
LAR Products

SureGrip™ Shoe Covers

Shoe Covers Heat-Sealed Seams

Blue	Size
AT71122-B	XL
AT81122-B	XL

Heat-sealed seams
150 pair/case



Dimensions	Size	Length (A)	Height (B)	Top (Relaxed) (C)	Top (Stretched) (C)
	XL	17 3/4"	7 1/2"	6"	11 1/2"

CPE Shoe Covers

Heat Sealed, Seamless Construction

Features & Benefits: Ideal for short wear applications or transition through cleanroom dress area, choose the heat sealed, seamless sole, all film CPE shoe covers.

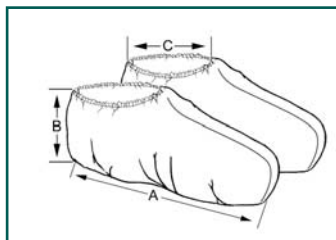
The SureGrip™ and AquaTrak® shoe and boot covers slide over this shoe cover easily. This speeds up the donning of the final cleanroom shoe cover.

Shoe Covers Heat-Sealed Seams

White	Size
SH-G1253-B	XL

Blue	Size
SH-H1253-B	XL

All film, fluid resistant,
seamless sole,
heat-sealed seams
500 pair/case



Dimensions	Size	Length (A)	Height (B)	Top Relaxed (C)	Top Stretched (C)
	XL	16"	5 3/4"	3 1/4"	16"

Face Masks & Shields

PFL® N-95 Particulate Respirator

NIOSH Approved Respirator



695

Features & Benefits: The PFL® N-95 Particulate Respirator mask meets WHO and CDC recommended protection levels. NIOSH defined bacterial filtration efficiency delivers the safe protection needed against airborne pathogens and contamination. A trio of patented and exclusive design features supplies additional protection and comfort benefits unmatched in the industry. The Magic Arch® holds the mask away from the nose and mouth for comfortable breathing and the Positive Facial Lock® with the Twist-Seal® chin piece design helps any wearer create a perfect fit with no gaps that might allow small particles to be inhaled around the edges of the mask. Downward vision is not restricted for added safety.

PFL® N-95 Particulate Respirator

695 Teal Stripe, Double Headband

210/case (6 boxes of 35)

Performance	
Test Performed	Result (Average)
Differential Pressure per MIL-M36954C	5.9 mm H ₂ O/cm ²
Latex Particle Challenge (Filtration Efficiency) @ 0.1 micron per ASTM F2299	99.8%

PFL® Maximum Protection Masks

Breathe Easier and Safer

Features & Benefits: Innovation is built into these high performance masks. The patented Positive Facial Lock® with the exclusive Twist-Seal® lets the user create a super secure custom fit to help eliminate the possibility of inhaling small particles...no gaps around the border of the mask. There's more: the patented Magic Arch® internal support holds the mask away from your nose and mouth to let you breathe easier, enhance filtration performance

and maintain maximum comfort...all without impeding "down vision."

The hypoallergenic materials used in the PFL® masks create a durable exterior and a soft, comfortable interior. There is no fiberglass and no exposed metal in these masks, reducing particulate contamination for cleanroom use.

Performance	
Test Performed	Result (Average)
Differential Pressure per MIL-M36954C	1.9 mm H ₂ O/cm ²
Latex Particle Challenge (Filtration Efficiency) @ 0.1 micron per ASTM F2299	98.5%

PFL® Headband Masks

608 Blue
608 BS Blue Stripe
608 PD Purple Designer

300/case (6 boxes of 50)



608 PD

LAR Products

ShieldMate® Mask w/Eye Shield

Double-Duty Protective Performance

Features & Benefits: Get eye and face splash protection and inhalation security in this top value design. The ShieldMate® combination face mask and eye shield features a low glare, anti-fog treated, optically clear shield ultrasonically welded to the mask. An anti-fog foam strip on the mask eliminates eyewear fogging. The patented Magic Arch® support strip holds the mask away

from the nose and mouth to create a larger breathing chamber without limiting downward vision. This results in cooler, more comfortable performance for the wearer. Comfortable ties and a full-length aluminum nosepiece comfortably secure the ShieldMate mask to the face.

Performance	
Test Performed	Result (Average)
Differential Pressure per MIL-M36954C	1.9 mm H ₂ O/cm ²
Latex Particle Challenge (Filtration Efficiency) @ 0.1 micron per ASTM F2299	98.5%

ShieldMate® Tie Mask

BL 8101 S Blue w/ties and anti-fog foam strip

100/case (4 boxes of 25)



BL 8101 S

Coverall® Face Shields

High Performance Splash Protection

Features and Benefits: When you need total facial splash protection, choose the Coverall® Face Shield. The face shield gives you great peripheral vision while acting as a shield against dangerous splashes in the work environment. You can wear the lightweight shield comfortably for long periods and it fits easily over glasses. A double-sided

anti-fog coating virtually eliminates fogging. For safe working conditions, the shield is low distorting and 100% optically clear. A soft polyurethane foam headband fits snugly against the forehead. Full-face style provides complete coverage including the sides of the face.



2807

Coverall® Full Face Shields

2802 Velcro® Adjustable Band

2807 Comfort Band

100/case (4 boxes of 25)



2803

Coverall® Half Face Shields

2803 Velcro® Adjustable Band

2808 Comfort Band

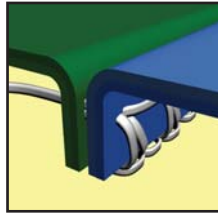
100/case (4 boxes of 25)

LAR Products

Seam Construction

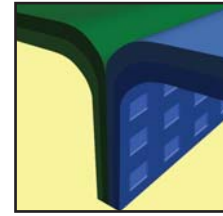
Serged Seams

This seam is produced when the threads are interlocked around the material edges for a strong stress-resistant seam. Overlapping stitching provides strength and durability.



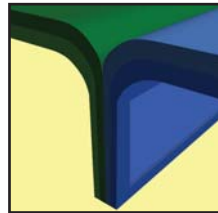
Ultrasonic Welded Seams

This sealed seam has no thread or needle holes. The material is welded together creating an excellent particle and fluid barrier.



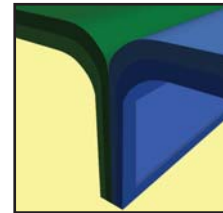
Heat-Sealed Seams

This strong, impervious seam is used when ultrasonic welding is incompatible with the garment material. Used in shoe cover production.

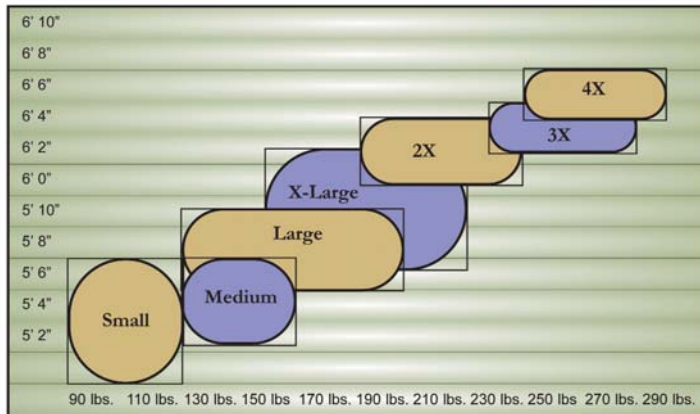


Safety Stitched Seams

An extra safety stitch is added above the serged seam to offer added strength, durability and protection. Used in scrubs production.



Sizing Chart



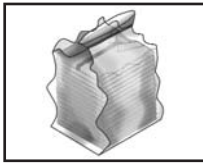
Please contact us for other sizing

LAR Products

Apparel Packaging

Designed to Limit Contamination Entering Your Environment

- Packaged in a primary vacuum heat sealed bag, carton liner and outer corrugated carton to prevent cross contamination and contamination migration from one environment to another.
- All garments are precision folded and stacked within the primary bag to permit efficient storage with or without bins.
- All open seams on shipping containers are tape sealed to further prevent contamination.
- Four-sided carton labeling allows easy identification and inventory management.



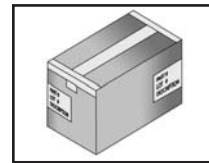
Primary Bag,
heat sealed



Carton Liner



Open carton with
taped down liner



Sealed carton with
two corner labels

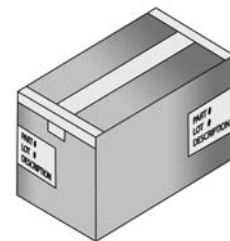
Facemask Packaging



Dispenser boxes



Dispenser boxes in carton



Carton taped sealed

LAR Products

Apparel Physical Properties

Standard Applied	Test Method	ComforTech®	AlphaGuard®
Ball Burst Strength	(Puncture Strength) ASTM D3787	Average 21 lbs	Average 14 lbs
BFE (Bacterial Filtration Efficiency)	MIL-M-36954C	99.90%	84.00%
Delta P (Differential Pressure)	MIL-M-36954C	mm H ₂ O/cm ² >122	mm H ₂ O/cm ² 1.70
ESD (Electrostatic Decay Rate)	Fed. Std. 101C Method 4046 ASTM D257	Pass	Pass
Grab Tensile Properties	ASTM D751 MD-Tensile Strength TD-Tensile Strength	Average 30 lbs 32 lbs	Average 16 lbs 27 lbs
Helmke Drum	IEST-RP-CC003.3	Category II	Category II
Mass/Unit Area	ASTM D751	Average 1.69 oz/sq yd	Average 1.46 oz/sq yd
Mullen Burst Strength	ASTM D3786	68 psi	144 psi
Puncture Propagation Tear Resistance	ASTM D2582 MD-Tensile Strength TD-Tensile Strength	Average 5 lbs 6 lbs	Average 7 lbs 11 lbs
Trapezoid Tearing Strength	ASTM D4533 MD-Tensile Strength TD-Tensile Strength	Average 9 lbs 8 lbs	Average 11 lbs 7 lbs
Water Resistance Impact Penetration	AATCC Method 42	No Visible Penetration	Penetration Seen
Water Vapor Transmission	ASTM E96	Average 0.465 oz/yd ² /hr	Average 1.328 oz/yd ² /hr

MD - Machine Direction TD - Transverse Direction NT- Not Tested

LAR Products

Shoe & Boot Cover Physical Properties

Standard Applied	Test Method	AquaTrak®	SureGrip™
Ball Burst Strength	(Puncture Strength) ASTM D3787	Average 23 lbs	Average 30 lbs
BFE (Bacterial Filtration Efficiency)	MIL-M-36954C	99.90%	99.90%
Delta P (Differential Pressure)	MIL-M-36954C	mm H ₂ O/cm ² >119	mm H ₂ O/cm ² >119
COF (Coefficient of Friction)	ASTM D1894 Static Kinetic	0.619 0.607	0.700 0.795
Grab Tensile Properties	ASTM D751 MD-Tensile Strength TD-Tensile Strength	Average 28 lbs 40 lbs	Average 26 lbs 30 lbs
Helmke Drum	IES-RP-CC003.2	Category I	Category I
Mass/Unit Area	ASTM D751	Average 1.77 oz/sq yd	Average 1.46 oz/sq yd
Mullen Burst Strength	ASTM D3786	146 psi	67 psi
Puncture Propagation Tear Resistance	ASTM D2582 MD-Tensile Strength TD-Tensile Strength	Average 10 lbs 9 lbs	Average 6 lbs 4 lbs
Trapezoid Tearing Strength	ASTM D4533 MD-Tensile Strength TD-Tensile Strength	Average 12 lbs 17 lbs	Average 12 lbs 12 lbs
Water Resistance Impact Penetration	AATCC Method 42	No Visible Penetration	No Visible Penetration
Water Vapor Transmission	ASTM E96	Average 0.017 oz/yd ² /hr	Average 0.021 oz/yd ² /hr

MD - Machine Direction TD - Transverse Direction

LAR Products

ComforTech® Chemical Penetration Test

Chemical Name (Test Method Used: ASTM F903)	Pass / Fail	Time of Failure	Chemical Concentration
Bleach - Household	Pass	N/A	100%
Diesel Fuel	Pass	N/A	100%
Hydrofluoric Acid	Pass	N/A	10%
Hydrogen Peroxide	Pass	N/A	30%
Isocyanate Spray Paint Hardener	Pass	N/A	100%
Isocyanate Spray Paint Reducer	Pass	N/A	100%
Muriatic Acid (HCl)	Fail	N/A	31%
Phosphoric Acid	Pass	<5 min	85%
Round Up*	Pass	N/A	100%
Sodium Hydroxide	Pass	N/A	50%
Sulfuric Acid	Fail	50 min	93%
Toluene	Fail	45 min	99%
40 Weight Motor Oil	Pass	N/A	100%
Vesphene II SE*	Pass	N/A	100%
SporKlenz*	Pass	N/A	100%

WARNING: These garments and associated materials are not suitable for use in some environments containing certain chemicals and/or hazardous agents. It is the responsibility of the user to determine the level of risk in a particular environment and the proper personal protection equipment needed. Garments manufactured from synthetic non-woven material may generate static electricity. Garments that contain an anti-stat treatment are not intended to be used as a safety feature. These garments are not recommended to be used in a flammable and/or explosive environment. If you have any questions, contact your distributor or Alpha Pro Tech for garment/fabric safety data. The use of this product is out of Alpha Pro Tech's control. Therefore, Alpha Pro Tech makes no warranties, expressed or implied, and assumes no liability as to the performance of these products for a particular use. **CAUTION: AVOID HEAT AND/OR OPEN FLAME.**

UCC Limited Warranty and Exclusions

Limited Warranty; Disclaimer and Limitation of Remedies: The products shall be free from defects in material and workmanship. ALPHA PRO TECH HEREBY EXPRESSLY DISCLAIMS ALL WARRANTIES, EITHER EXPRESSED OR IMPLIED, INCLUDING ANY IMPLIED WARRANTY OF MERCHANTABILITY OR FITNESS FOR A PARTICULAR PURPOSE. Buyer's remedy is expressly limited to replacement of any defective product and Alpha Pro Tech shall have no responsibility for any incidental or consequential damages. Any claims under this warranty must be made in writing to Alpha Pro Tech and must be made with 90 days of the purchase.

Alpha Pro Tech, Inc. reserves the right to change any prices, terms and conditions of sale at any time without any notice.

AlphaGuard, AquaTrak, Coverall, GenPro, Magic Arch, PFL, Positive Facial Lock, ShieldMate, SmartWear, SofWear, SureGrip, Twist-Seal and Unreal Lambskin are trademarks of Alpha Pro Tech, Inc.

Velcro is a trademark of Velcro Industries B.V.



**Alpha Pro Tech is committed to protecting people,
products, manufacturing and healthcare environments to
optimize process effectiveness and customer profitability.**

Ordering Information: To place an order, receive a sample or obtain more information,
please contact our Customer Service Department toll-free from
9:00 a.m. to 5:00 p.m. Eastern Time at:

Phone: 800-749-1363

Fax: 905-479-8703

E-mail: sales@alphaprotech.com

International customers please use the following contact information:

Phone: 520-281-0127 Ext. 201

Fax: 520-281-0235

E-mail: ccrespo@alphaprotech.com

Visit us at: www.alphaprotech.com

AlphaProTech
INCORPORATED