

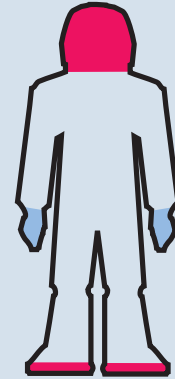
Gowning Procedure

(Non-Sterile)

Gown Up

Step 1 - In order:

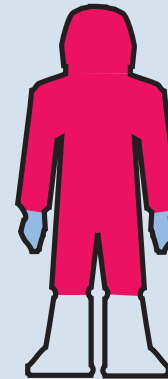
- Shoe Covers
- Bouffant/Hairnet - Be sure to contain all hair.
- Gowning Gloves - Recommended for Class 100 and better.
- Hood - Ensure snug fit and proper face/neck seal.
- Mask - Can be worn under or over hood. Bend nosepiece first for a snug facial fit.
- Goggles or Safety Glasses - Wear when eye protection or additional particulate control is desired.



Headgear

Step 2

Step into coverall. Be sure sleeves and upper garment do not touch bench or floor. Tuck shoulder panels from hood inside coverall before zipping up.



Coverall

Step 3

Put on boots and pull boots (high-top shoe covers) over legs of coverall.

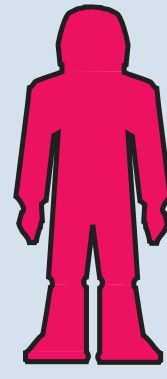


Boots

Step 4

Don second pair of gloves, or discard first pair and re-glove.

For maximum particulate protection, place hem of glove over cuff of sleeve.

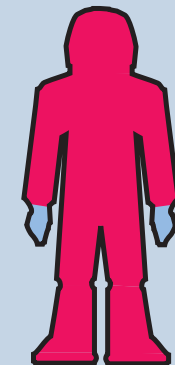


Gloves

Gown Change

Step 1 - In order:

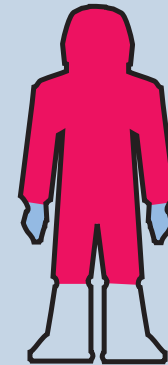
If two pairs of gloves are worn, remove boots, then discard top pair of gloves. If only one pair of gloves are worn, remove gloves last. It is recommended that gloves be discarded after each change.



Gloves

Step 2

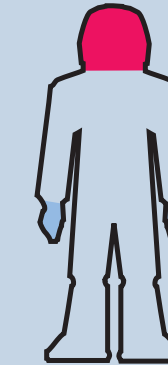
If boots are to be used again, store them separately from other garment components, either downwind or in a proper container.



Boots

Step 3

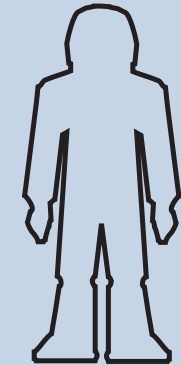
If coverall is to be used again, either hang it in a controlled environment or prepare for storage.



Coverall

Step 4 - In order:

- Hood - Hang in controlled environment.
- Remove Goggles or Safety Glasses
- Mask - Usually discarded after each change.
- Bouffant/Hairnet - Usually discarded after each change.
- Shoe Covers - Usually discard after each change.
- Gloves - It is recommended that gloves be discarded after each change.



Headgear

(The above are recommendations only. Gowning procedures may vary by location.)

AlphaProTech
INCORPORATED

APT-3040 3/04