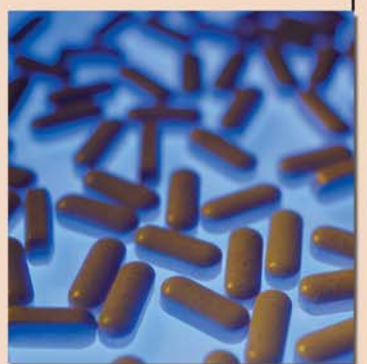


Critical Cover

SureGrip™ Shoe Covers

Dedicated to the protection of
people, products and environments™

AlphaProTech
INCORPORATED



Critical Cover® SureGrip™ Shoe Covers

Multiple Style Options for Maximum Versatility

Features and Benefits: Proven in the marketplace, our SureGrip™ shoe covers have established themselves as the shoe cover of choice for a wide range of floor surfaces and in many different applications. Combining durability and cleanliness with outstanding anti-skid properties, SureGrip provides you with a blend of unmatched performance and overall value.

Multiple style and packaging options add to the versatility of SureGrip: serged seams for added strength, traction and a snug fit for safety; butterfly style with serged seams for a comfortable fit; heat-sealed seam version for absolute particulate and biological containment; unique conductive shoe cover for those environments where electro-static dissipation (ESD) protection is required.

Our Gaylord packaging option (30 individual bags of 300 each per master carton) for select SureGrip shoe covers reduces waste, labor, and purchase orders while increasing your shelf-space and providing a reusable, pallet sized container for your recyclables or other materials.

Dry Conditions

Serged Seams

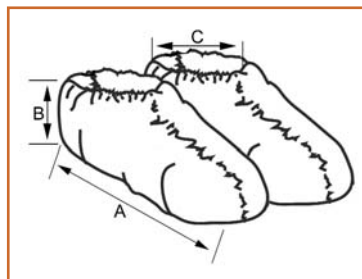
Blue	Size	Thread Colors
SH-X1222-B	Univ.	White
SH-X1223-B	XL	Black
SH-X1224-B	2X	Blue

Non-skid, thread colors for size identification
150 pair/case

Gaylord Packaging

Blue	Size	Thread Colors
SH-X1272-B	Univ.	White
SH-X1273-B	XL	Black
SH-X1274-B	2X	Blue

4,500 pair/case



Dimensions	Size	Length (A)	Height (B)	Top Relaxed (C)	Top Stretched (C)
	Univ.	15 1/2"	6 1/4"	4 1/2"	9 1/2"
	XL	17"	6 1/2"	5"	11 1/2"
	2X	18 1/2"	6 3/4"	5 1/2"	12 1/2"

Critical Cover® SureGrip™ Shoe Covers

Dry Conditions

Seamless Sole

Lt. Blue

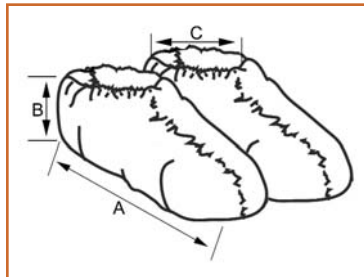
SH-01132-B
SH-01133-B
SH-01134-B

Size

Univ.
XL
2X

Thread

Colors
White
Black
Blue



Butterfly style, seamless sole
serged seams
200 pair/case

Dimensions	Size	Length (A)	Height (B)	Top Relaxed (C)	Top Stretched (C)
	Univ.	15 1/2"	6 1/2"	4 1/2"	10 1/2"
XL	17"	7"	5"	11"	
2X	19"	7 1/4"	5 1/2"	13"	

Damp Conditions

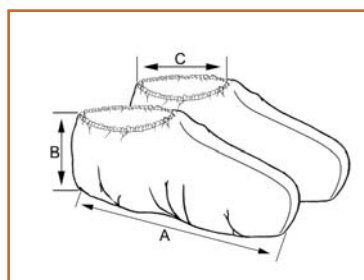
Heat-Sealed Seams

Blue

AT71122-B
AT81122-B

Size

XL
XL



Heat-sealed seams
150 pair/case

Dimensions	Size	Length (A)	Height (B)	Top (Relaxed) (C)	Top (Stretched) (C)
	XL	17 3/4"	7 1/2"	6"	11 1/2"

Critical Cover® SureGrip™ Shoe Covers

Conductive/ESD Protective



Anti-Shock

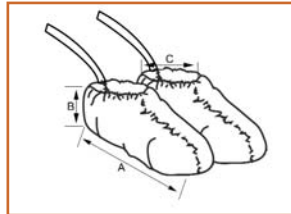


ESD Protective

Conductive

Blue	Size	Thread Colors
SH-12522-B	Univ	White
SH-12523-B	XL	Black

Conductive,
serged seams
150 pair/case



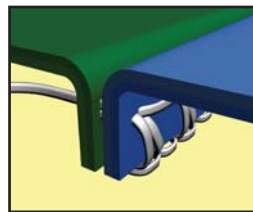
Dimensions

Size	Length (A)	Height (B)	Top (Relaxed) (C)	Top (Stretched) (C)
Univ	15 1/2"	6 1/4"	4 1/2"	9 1/2"
XL	17"	6 3/4"	5"	11 1/2"

Seam Construction

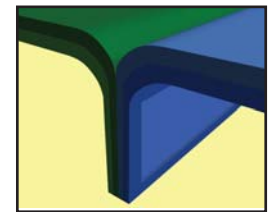
Serged Seams

This seam is produced when the threads are interlocked around the material edges for a strong stress-resistant seam.



Heat-Sealed Seams

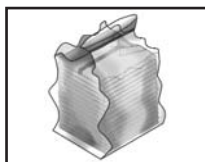
This strong, impervious seam is used when ultrasonic welding is incompatible with the garment material. Used in shoe cover production.



Packaging Perfection

Designed to Limit Contamination Entering Your Environment

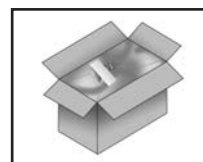
- Packaged in a primary vacuum heat sealed bag, carton liner and outer corrugated carton to prevent cross contamination and contamination migration from one environment to another
- All open seams on shipping containers are tape sealed to further prevent contamination
- Four-sided carton labeling allows easy identification and inventory management



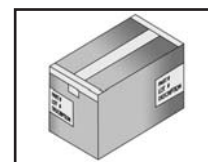
Primary Bag, heat sealed



Carton Liner



Open carton with taped down liner



Sealed carton with two corner labels

Critical Cover® SureGrip™ Shoe Covers

Physical Properties

Standard Applied	Test Method	SureGrip™
Ball Burst Strength	ASTM D3787 Puncture Strength	Average 30 lb
BFE (Bacterial Filtration Efficiency)	MIL-M-36954C	99.90%
COF (Coefficient of Friction)	ASTM D1894 Static Kinetic	0.700 0.795
Delta P (Differential Pressure)	MIL-M-36954C	mm H ₂ O/cm ² >119
ESD (Electrostatic Decay Rate) (Conductive Shoe Covers Only)	Fed. Std. 101C Method 4046 ASTM D257	Pass
Grab Tensile Properties	ASTM D751 MD-Tensile Strength TD-Tensile Strength	Average 26 lb 30 lb
Helmke Drum (unwashed)	IEST-RP-CC003.3	Particles/cubic ft. @ 0.5 micron 17
Mass/Unit Area	ASTM D751	Average 1.46 oz/sq yd
Mullen Burst Strength	ASTM D3786 (Modified)	67 psi
Puncture Propagation Tear Resistance	ASTM D2582 MD-Tensile Strength TD-Tensile Strength	Average 6 lb 4 lb
Trapezoid Tearing Strength	ASTM D4533 MD-Tensile Strength TD-Tensile Strength	Average 12 lb 12 lb
Water Resistance Impact Penetration	AATCC Method 42	No Visible Penetration
Water Vapor Transmission	ASTM E96	Average 0.021 oz/yd ² /hr

MD - Machine Direction TD - Transverse Direction

Critical Cover® SureGrip™ Shoe Covers

Notes:

Critical Cover® SureGrip™ Shoe Covers

WARNING: These garments and associated materials are not suitable for use in some environments containing certain chemicals and/or hazardous agents. It is the responsibility of the user to determine the level of risk in a particular environment and the proper personal protection equipment needed. Garments manufactured from synthetic non-woven material may generate static electricity. Garments that contain an anti-stat treatment are not intended to be used as a safety feature. These garments are not recommended to be used in a flammable and/or explosive environment. If you have any questions, contact your distributor or Alpha Pro Tech for garment/fabric safety data. The use of this product is out of Alpha Pro Tech's control. Therefore, Alpha Pro Tech makes no warranties, expressed or implied, and assumes no liability as to the performance of these products for a particular use. **CAUTION: AVOID HEAT AND/OR OPEN FLAME.**

UCC Limited Warranty and Exclusions

Limited Warranty; Disclaimer and Limitation of Remedies: The products shall be free from defects in material and workmanship. ALPHA PRO TECH HEREBY EXPRESSLY DISCLAIMS ALL WARRANTIES, EITHER EXPRESSED OR IMPLIED, INCLUDING ANY IMPLIED WARRANTY OF MERCHANTABILITY OR FITNESS FOR A PARTICULAR PURPOSE. Buyer's remedy is expressly limited to replacement of any defective product and Alpha Pro Tech shall have no responsibility for any incidental or consequential damages. Any claims under this warranty must be made in writing to Alpha Pro Tech and must be made with 90 days of the purchase.

Alpha Pro Tech, Inc. reserves the right to change any prices, terms and conditions of sale at any time without any notice.

Critical Cover and SureGrip are registered trademarks of Alpha Pro Tech, Inc.



**Alpha Pro Tech is committed to protecting people,
products, manufacturing and healthcare environments to
optimize process effectiveness and customer profitability.**

Ordering Information: To place an order, receive a sample or obtain more information,
please contact our Customer Service Department toll-free from
9:00 a.m. to 5:00 p.m. Eastern Time at:

Phone: 800-749-1363

Fax: 905-479-8703

E-mail: sales@alphaprotech.com

International customers please use the following contact information:

Phone: 520-281-0127 Ext. 201

Fax: 520-281-0235

E-mail: ccrespo@alphaprotech.com

Visit us at: www.alphaprotech.com

Critical Cover[®]

AlphaProTech
INCORPORATED